

ARVA MC170 SPECIFICATIONS

Series ARA1720LP 8½-Ton (7711 kg) Low Profile Mining Crane

	ENGINE, DIESEL		
	TRAVEL		
	OPERATOR'S CONTROL STATION		
	WHEELS & TIRES		
	BRAKES		
	BOOM		
	HOISTS		
	HYDRAULIC SYSTEMS		
	COUNTERWEIGHT		
	OUTRIGGERS		
	SWING		
	CARRY DECK		
	ELECTRICAL		
	DIMENSIONS		
	Engine	II Cummins model 4B4.5 80 hp @ 2500 rpm with power shift transmission.	
	Travel	• 4 X 4 Full time (4) four wheel drive, oscillating rear axle, full power hydraulic steer. • Power Shift Transmission (4) four speed forward & reverse with shifter on steering column.	
	Operator's control station	Spacious, comfortable, open cab, chassis mounted with seat, pilot operated controls, outrigger controls, anti-two block with hydraulic overload system, gauges for engine functions, steering wheel, horn, and seat belt. The operator's station is ROPS/FOPS protected.	
	Wheels & tires	Traction lug radial mine tread, 10:00 x 15, 16 ply	
	Brakes	Wheel internal wet disc brakes. Parking brake: fail-safe, spring applied, hydraulically released on transmission.	
	Boom	2 section, full power telescopic with holding valve Elevation 72 degrees Length 10.5' to 22' 3200 mm to 6706 mm	
	Hoists	Hydraulically powered winch rated for 12,970 lb (5883 kg) single line pull on first layer. The winch has a planetary type reduction with fail-safe multi-disc brake. Winch is equipped with 5/8" (15.9 mm) 6 X 9 DYPAC 6HS wire rope.	
	Hydraulic systems	Torque converter driven gear type pumps with combined 44.0 gpm @ 2500 rpm. Pumps supply hydraulic flow to hoist, boom extend, boom lift, swing, steering, brakes, and outriggers. Hydraulic oil reservoir: 39 US gal. 148 L	
	Counterweight	One piece, integral with turn table.	
	Outriggers	• Front and 2 rear, independently controlled. • Fully hydraulic with holding valves, with steel outrigger pads.	
	Swing	360 degrees ball bearing swing circle with hydraulic motor and worm gear drive.	
	Carry deck	• 55 sq. ft. (51100 cm sq). • 6 ton (5443 kg) deck loading capacity. • Carry post pockets.	
	Electrical	12V DC negative ground with disconnect, Deutsch waterproof connectors, marine grade wiring. Lighting package includes turn indicators, head, tail, brake, and hazards.	
	Dimensions	Length- frame, boom retracted 166" 4216 mm Height 71" 1803 mm Width 78" 1981 mm Weight- GVW 17,800 lb 8075 kg	

MEETS OR EXCEEDS ALL OSHA, ANSI, AND SAE REQUIREMENTS

43 Gaylord Rd., St. Thomas, ON, N5P 3R9
tel: (519) 637-1855 fax: (519) 637-1848
email: sales@arvaindustries.com • web: www.arvaindustries.com



THE 8½-TON (7771 kg)

ARVA MC170

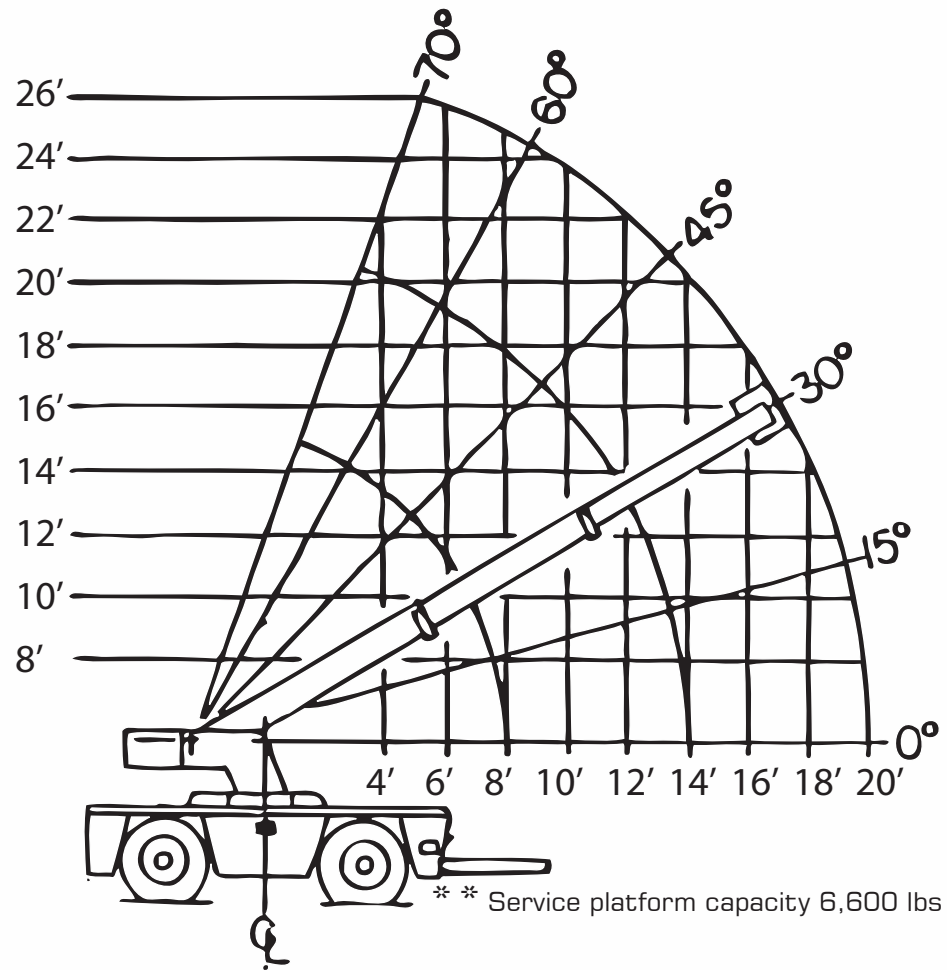
Rugged, mine-maintenance cranes since 1979

SMALL FOOT PRINT & LOW PROFILE 71" (1803 mm)
MAKE IT IDEAL FOR WORKING IN VERY TIGHT AREAS



BUILT TO THE TOUGHEST STANDARDS IN THE WORLD...YOURS!

MC170-1720LP 8½-TON CRANE CAPACITY CHARTS



☰ CAPACITIES FOR 360 DEGREE ROTATION

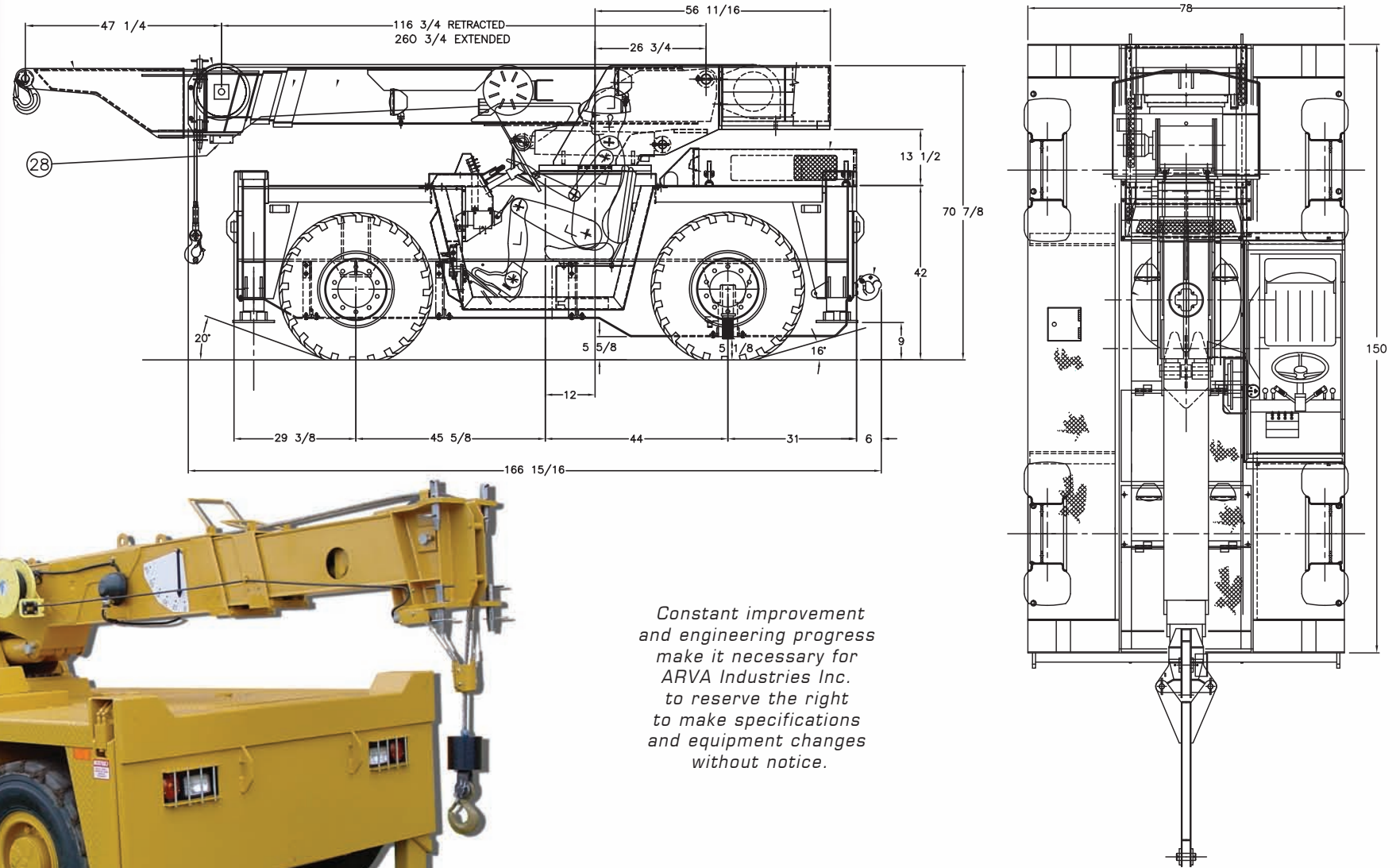
LOAD RADIUS Ft.	2-SECTION BOOM		2 FT. BOOM EXTENSION*
	ON TIRES	ON OUTRIGGERS	ON OUTRIGGERS
5	10700	17000	7000
6	9500	14500	7000
8	6400	10250	7000
10	4450	7700	6600
12	3400	6600	5600
14	2675	5550	7000
16	2175	4450	5500
18	1840	3900	4500
20	1550	3550	4000

* Capacities shown are with 2 ft boom extension and 1,130 lbs. extra counterweight

NOTES:

1. 2'-0" boom extension capacity: 7,000 lbs at 14'-0" radius
2. Carry capacity speed limit: 3 mph
3. Deck load capacity (centered over axle): 12,000 lbs
4. Work platform capacity, outriggers extended: 600 lbs total
5. Maximum hydraulic pressure: 3,000 psi
6. The booms on this unit are all steel and no line voltage rating.
7. All capacities apply to operation on firm, level surfaces.

MC170-1720LP 8½-TON CRANE DIMENSIONS



Constant improvement and engineering progress make it necessary for ARVA Industries Inc. to reserve the right to make specifications and equipment changes without notice.



- Spacious, comfortable operator compartment
- Excellent load visibility
- ROPS/FOPS protection
- Boom swings to rear for reduced travel length
- Marine grade wiring and connectors
- 9.5" (241 mm) ground clearance

- Full time 4 wheel drive, 4 wheel steer
- Custom, specialty engineered booms available
- Best load view
- -10 to +60 degrees elevation for easy access
- Smooth, precise pilot operated controls
- Very low overall height: 71" (1803 mm)
- 360 degrees continuous rotation

- 4 out-and-down outriggers with holding valves
- Independent outrigger controls
- Very small foot print - sets up in tight areas
- Fire suppression system
- Optional 24" (610 mm) boom for low ceiling work areas