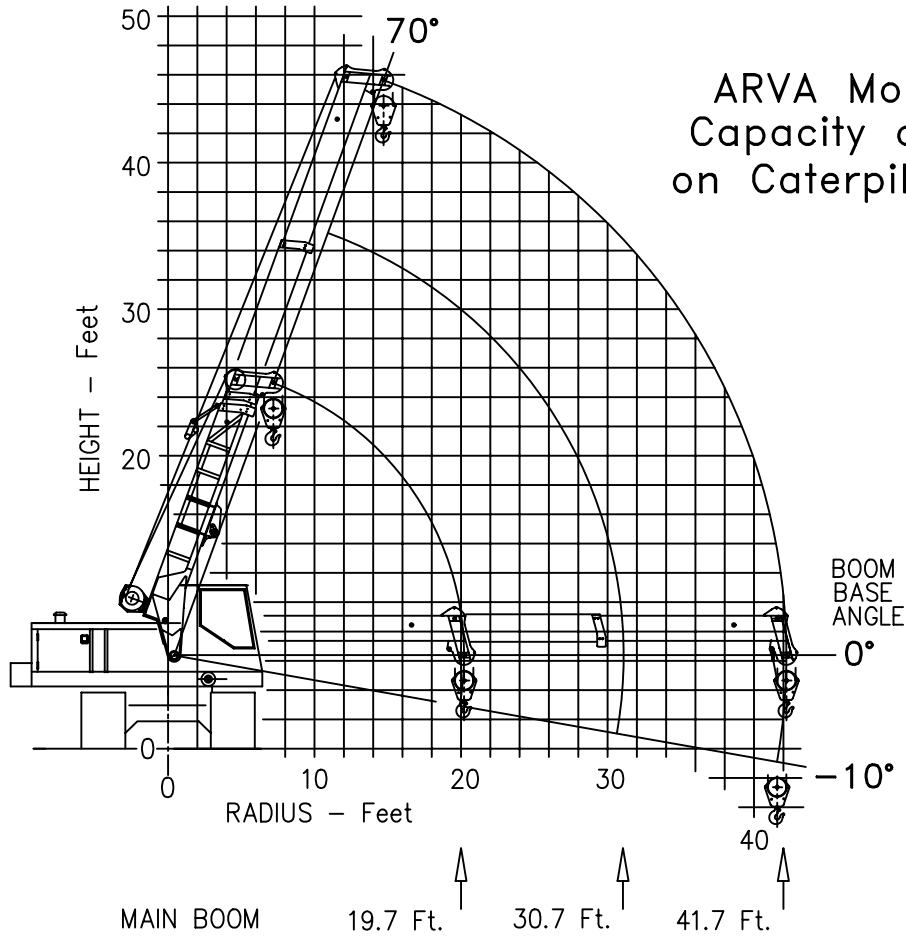


ARVA Model 3000 CRANE Capacity and Range Chart on Caterpillar 235B CARRIER



CAUTION:
CHART CONDITIONS

19.7 Ft. TO 41.7 Ft. BOOM
MOUNTED ON CARRIER WITH
104 INCH TRACK GAUGE AND
36 INCH TRACKS

STANDARD COUNTERWEIGHT
360 DEGREE ROTATION

CHART CAPACITIES FOR
BOOM ANGLES 0° TO 70°.
BELOW ZERO DEGREES
FOR RIGGING ONLY.

CARRIER TO BE SET LEVEL
FOR PROPER OPERATION.

RADIUS FT	BOOM LENGTH					
	RETRACTED 19.7 Ft. Boom		MID-POSITION 30.7 Ft. Boom		EXTENDED 41.7 Ft. Boom	
	Boom Angle	Pounds	Boom Angle	Pounds	Boom Angle	Pounds
10	60.9	40000				
12	54.0	40000	67.9	39150		
14	46.5	37400	63.8	33950		
16	37.8	30950	59.5	30000	68.1	28000
18	26.9	25800	55.0	26650	65.1	25000
20	6.7	20750	50.4	22750	62.0	22650
22			45.4	19650	58.8	19850
24			39.9	17350	55.6	17450
26			33.6	15400	52.2	15500
28			26.1	13750	48.6	13900
30			15.6	12400	44.8	12500
32					40.8	11350
34					36.4	10350
36					31.5	9450
38					25.7	8700
40					18.4	8000

NOTES TO OPERATION

- CAPACITIES BELOW SOLID LINE ARE BASED ON STABILITY AT 75% OF TIPPING.
- ATTEMPTS MAY BE MADE TO TELESCOPE BOOM UNDER ALL LOAD CONDITIONS BUT DUE TO LUBRICATION AND OTHER FACTORS IT'S OPERATION MAY BE LIMITED.
- REFER TO CRANE OPERATION MANUAL FOR COMPLETE INFORMATION.