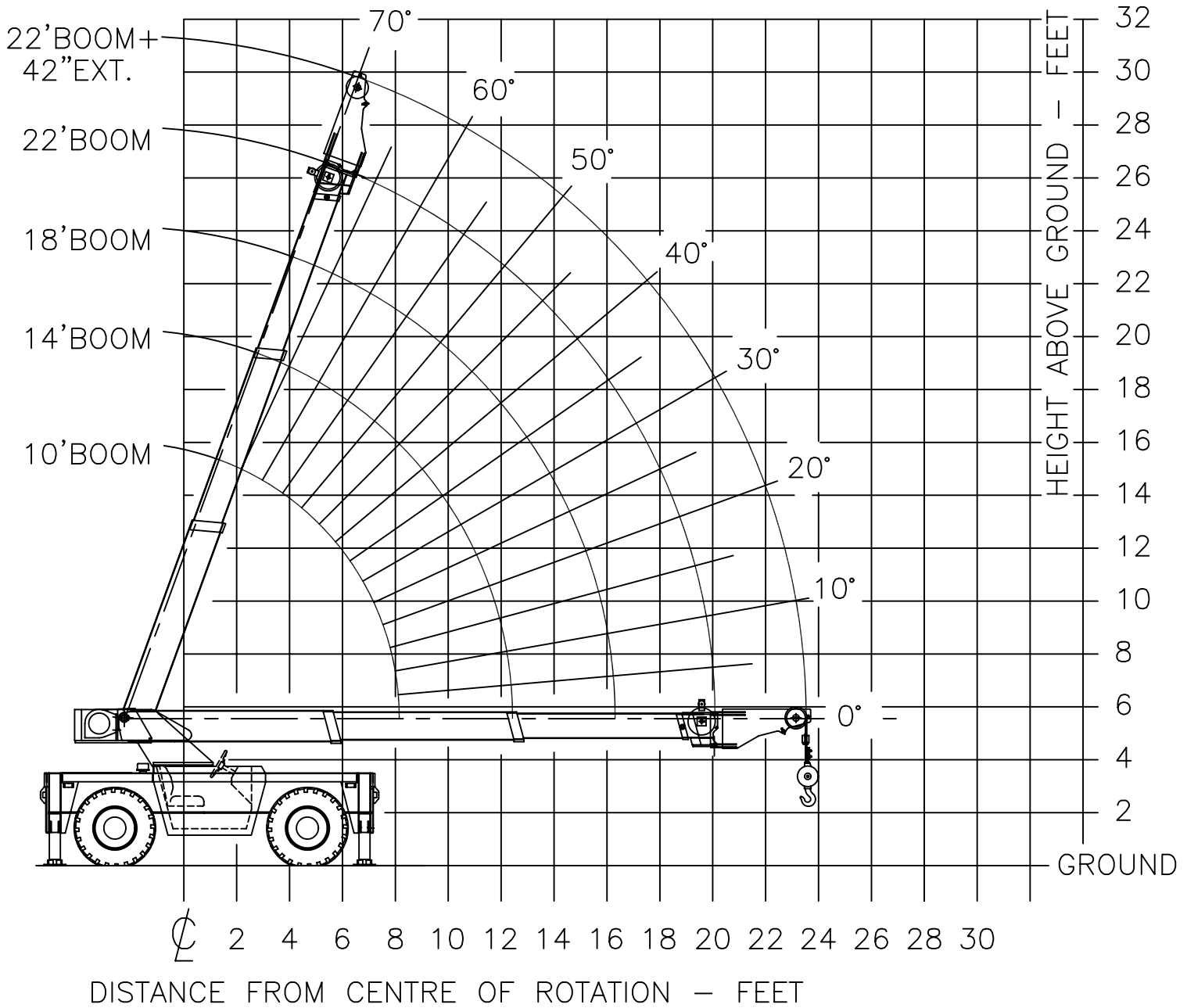


RANGE CHART — ARVA MODEL 1720 LP



CAPACITY CHART – ARVA MODEL 1720 LP

LOAD RAD. FT.	360 DEGREE			OVER FRONT			
	OUTRIGGER		TIRES MAIN BOOM	MAIN BOOM			42"EXT PICK+ CARRY
	MAIN BOOM	42"EXT RHINO		OUT- RIGGER	TIRES STATIC	PICK+ CARRY	
6	12950	8500	8500	12950	12950	9800	8500
8	12250	8500	<u>6900</u>	12250	<u>12250</u>	8000	7900
10	10700	8500	5300	10700	8650	6700	6600
12	9200	8500	4000	9200	6400	5700	5600
14	7950	8300	3200	7950	5000	<u>4950</u>	<u>4900</u>
16	7000	<u>7300</u>	2600	7000	4150	4150	4100
18	6250	6200	2100	6250	3450	3450	3400
20	<u>5450</u>	5400	1800	<u>5450</u>	2950	2950	2900
22	–	4650	–	–	–	–	2500

MAX LOAD AT MAX BOOM LENGTH AND ZERO DEGREE = 5450 lb.
 MIN BOOM ANGLE AT MAX BOOM LENGTH AND NO LOAD = 0 Degree.

NOTES TO LIFTING CAPACITY:

1. Max. Capacity of single part line = 12970 lb.
based on breaking strength of 22.7T with 3.5:1 F.O.S.
2. Crane is equipped for single part line only.
3. Capacities on outriggers are based on outriggers being fully extended out and down.
4. Capacities below BOLD lines are based on stability factors:
Stability factor on outriggers = 85%
Stability factor on tires = 75%
5. Crane is fitted with standard LP counterweight and belly guards.
6. Capacities shown are line loads – hook, ball, rigging and load handling equipment are to be considered part of the load.
7. Always use shortest boom length to obtain required load radius.
8. Deduct 100 lb. from load line capacity when 24" extension is installed.
9. Pick and Carry speed is 2 1/2 mph
10. Tire pressure is 115 psi max. F.Gor 10.00–15 NHS TRHRMI LR'H'tires.
11. Pick and carry loads are restricted to within tire track width over front.
12. Main carry deck capacity = 12,000 lb, centred over two tires, uniformly distributed and supported on crane deck.